

It's a garden party,

LETTUCE TURNIP THE BEET!



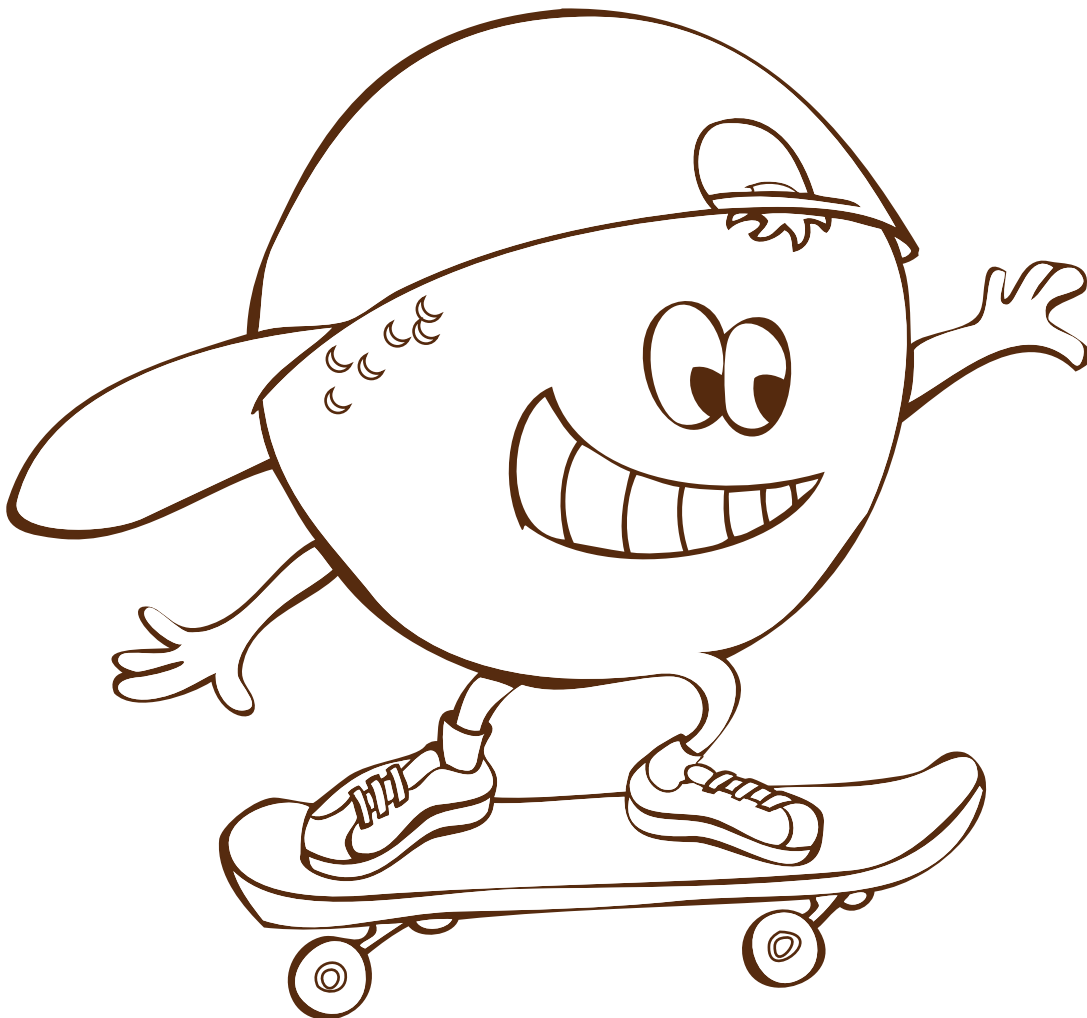
KNOCK KNOCK!

Who's there?

Orange.

Orange who?

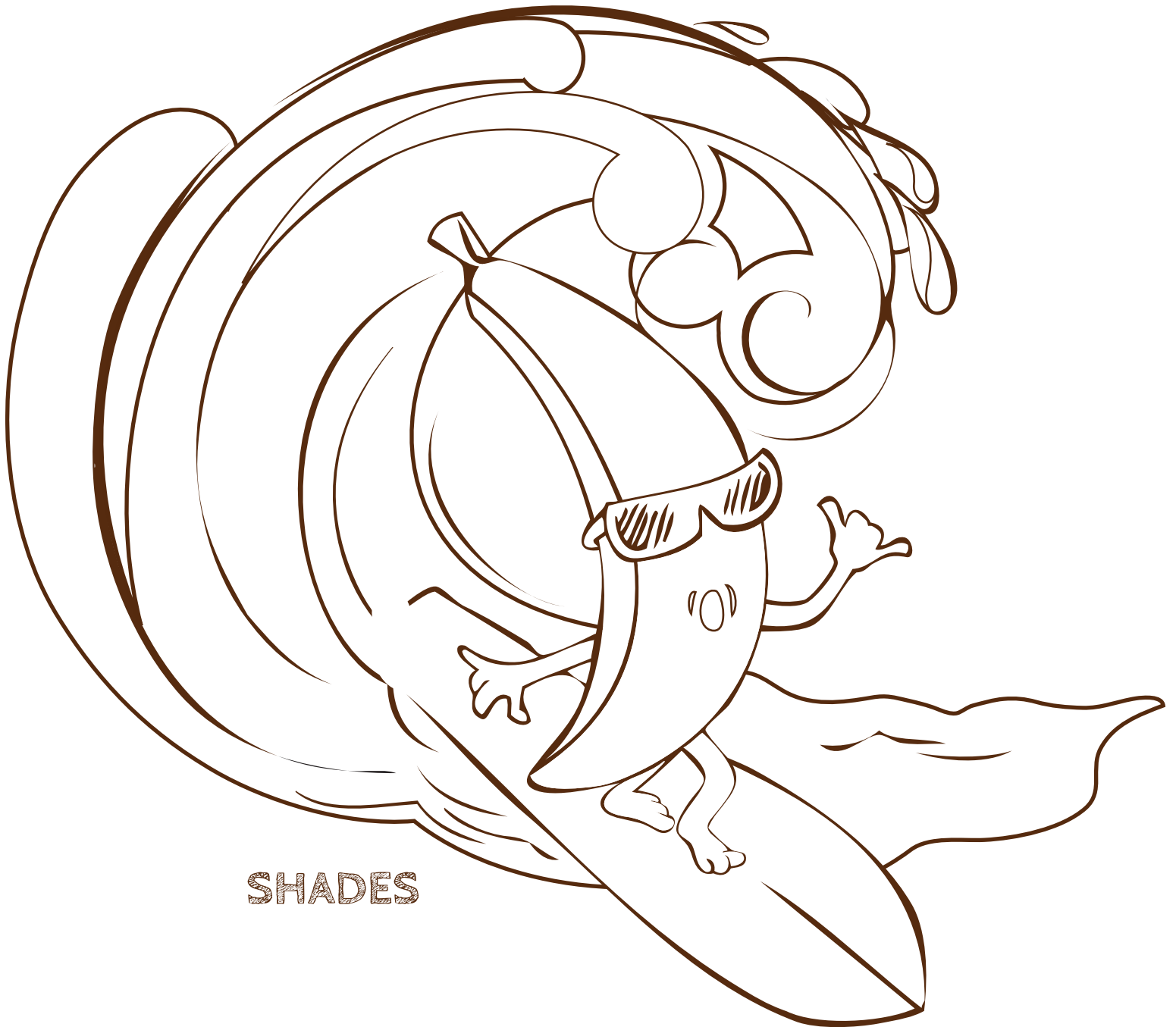
Orange you glad I'm here?



OLLIE

Q: Why aren't bananas ever lonely?

A: Because they come in bunches!

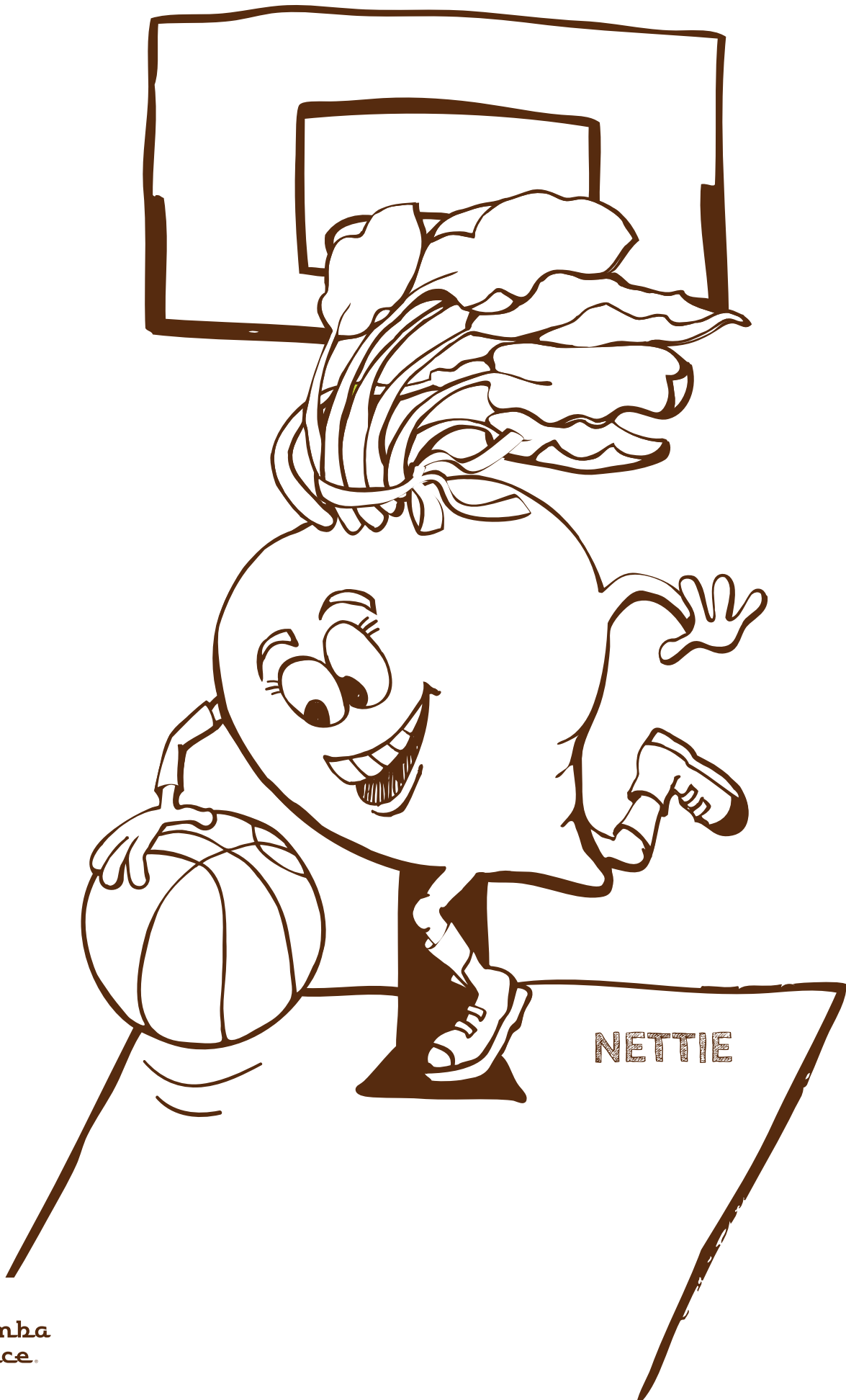


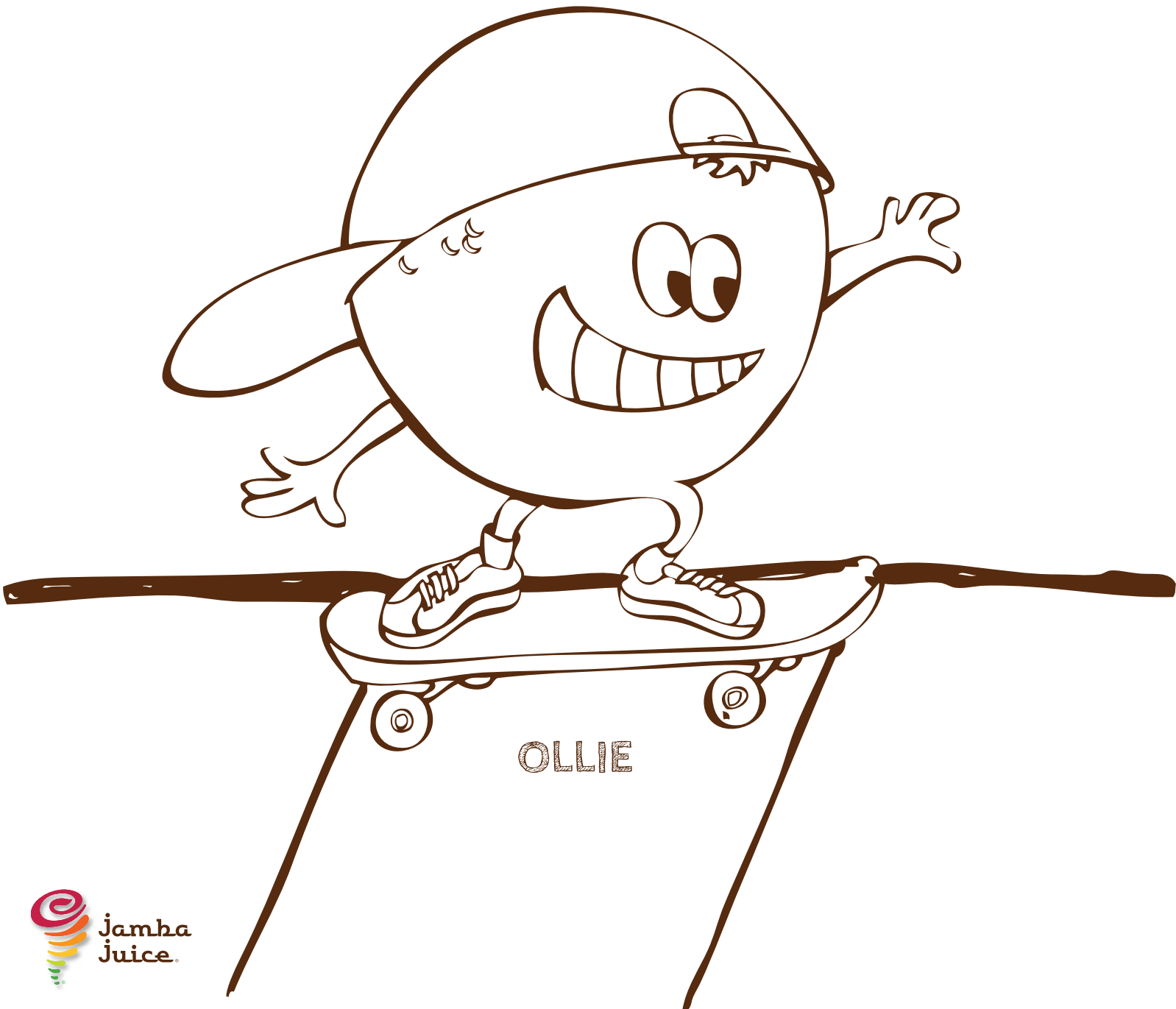
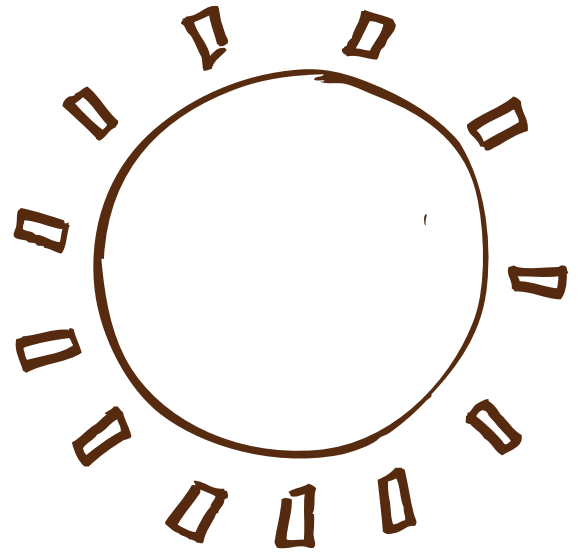
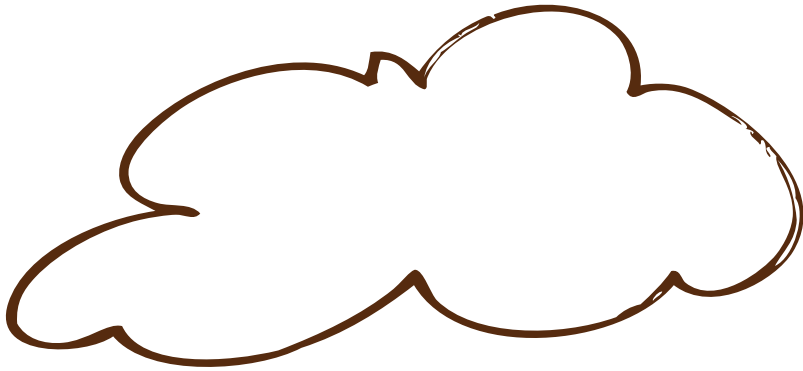
FUN FACT:

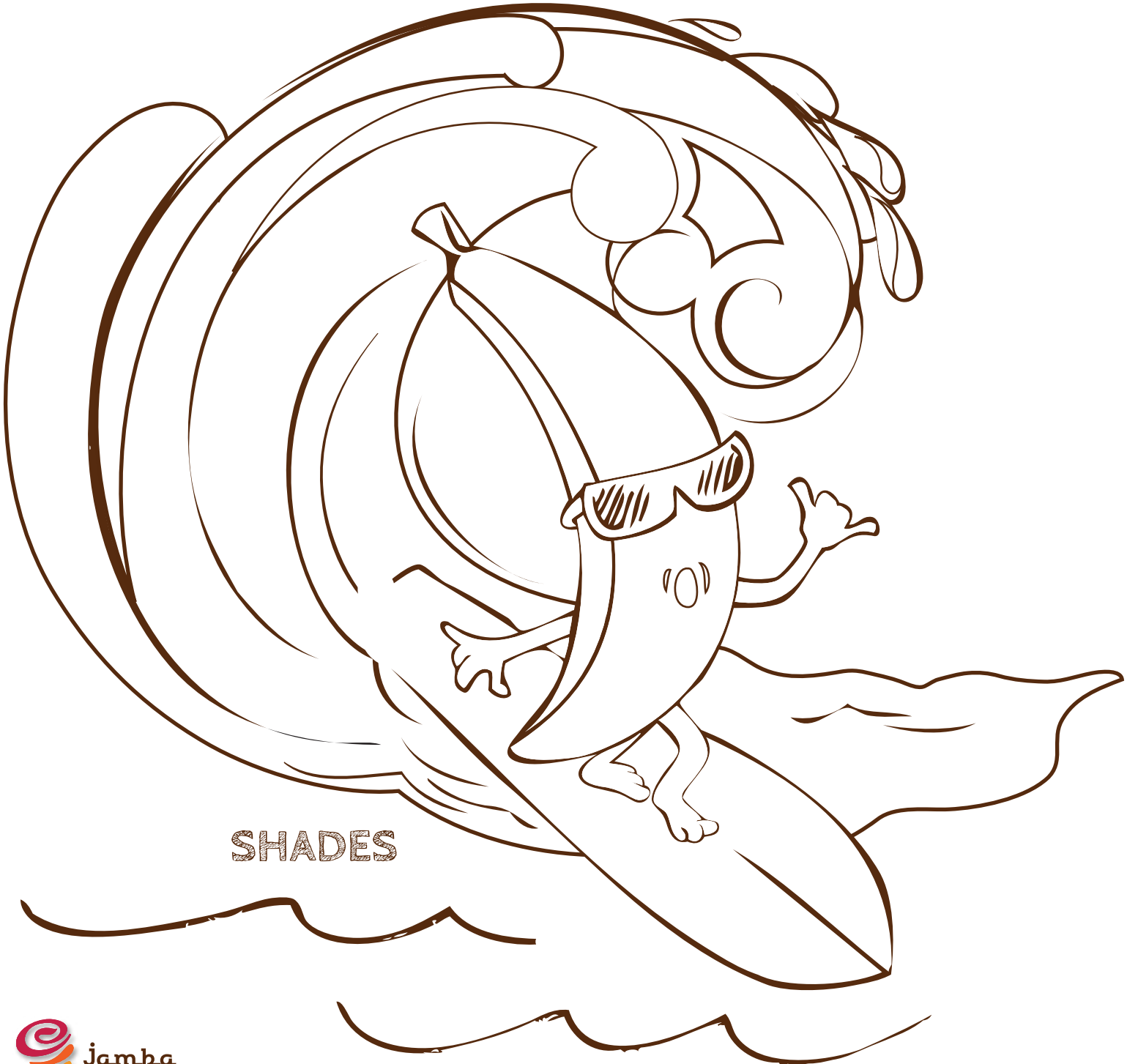
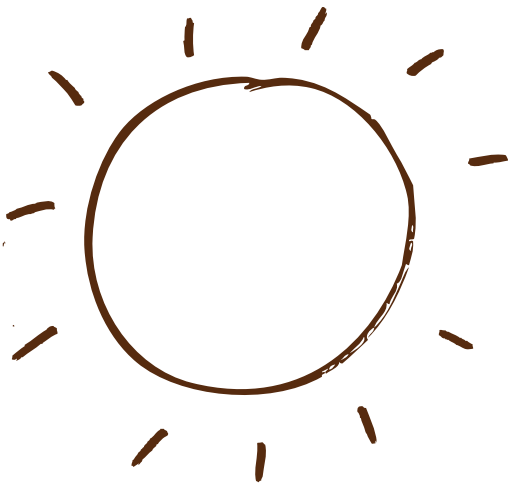
Did you know that strawberries are the only fruit with seeds on the outside?



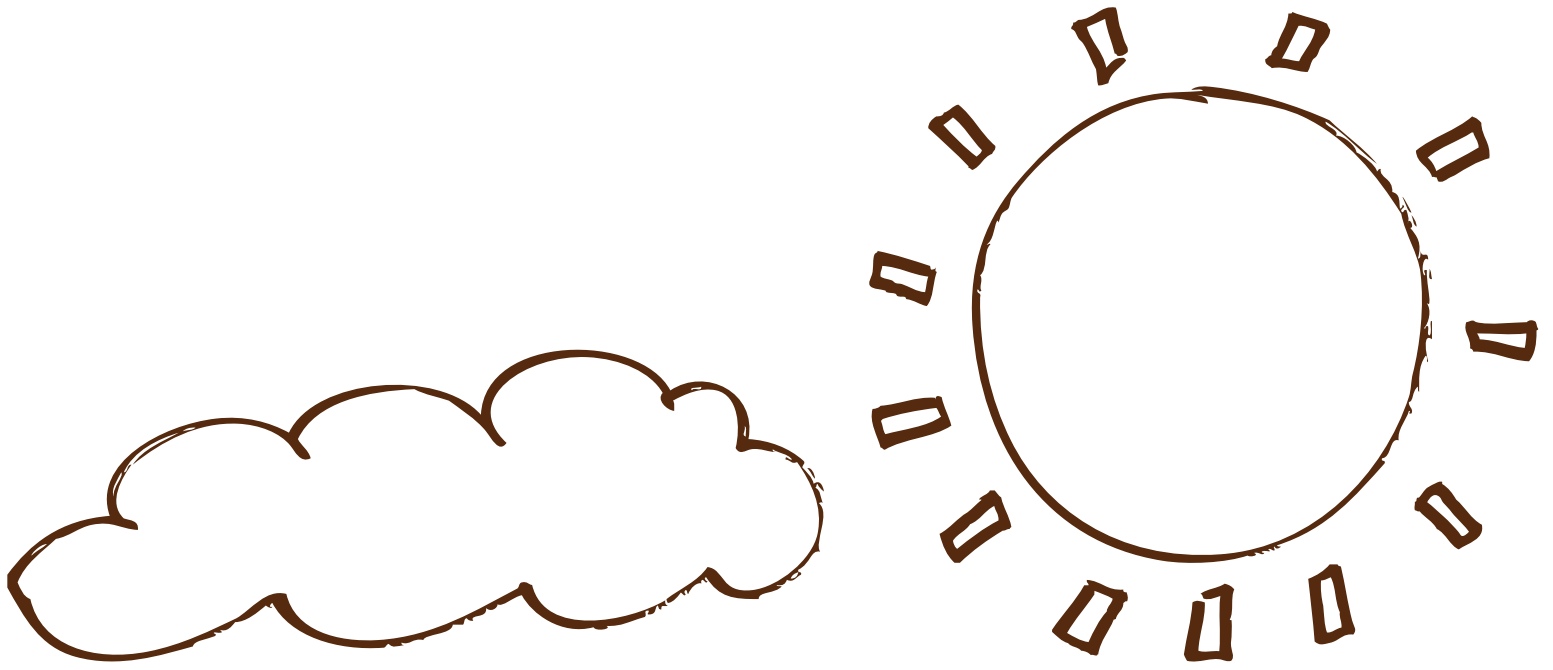
PATCHES







SHADES



PATCHES